

ER-Series Military Vehicle Motor

This type of permanent magnet DC motor is mainly used in a variety of military vehicle professional systems. For example, armored vehicles, wheeled chariots, anti-riot cars. In this system, the DC motor is not only used as an actuator but also an drive components.

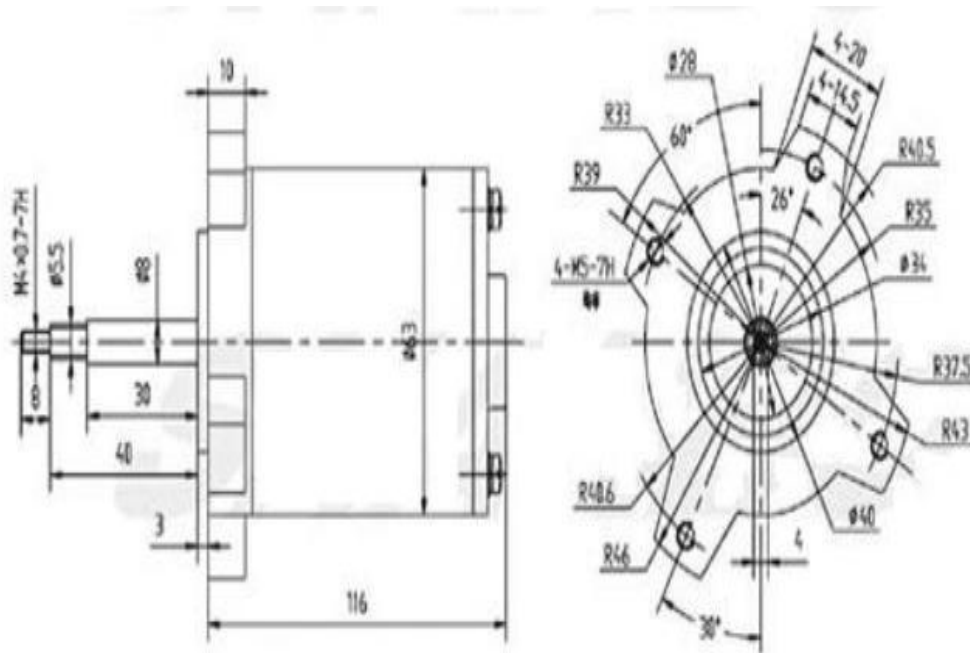


Using condition:

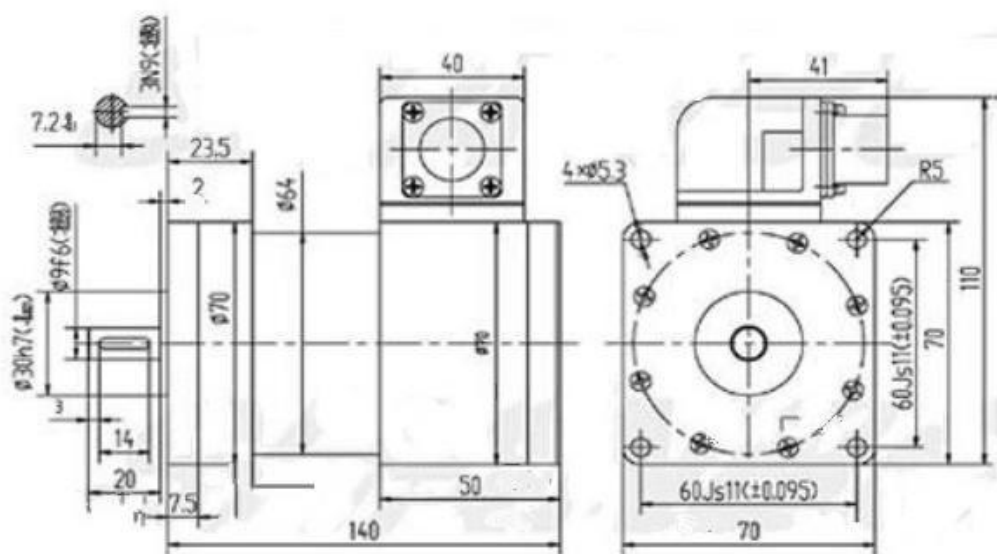
1. The environment temperature: $-40^{\circ}\text{C} \sim 80^{\circ}\text{C}$
2. Air relative humidity: $\leq 95\%$

Part No.	Voltage V	Rotary speed r/min	Output power (W)	Remark
ER-55ZY80	24~56	3000~9500	10~30	See Picture 1
ER-63SYX02	24~56	3000~7000	65~150	See Picture 2
ER-63SYX52	24~56	3000~7000	108~260	See Picture 3
ER-J64SY900	24~56	4000~6000	840~1300	See Picture 4
ER-84ZY37~JPX36	24~56	60~220	120~460	See Picture 5
ER-J94SY1600	24~56	5000~7500	1000~1600	See Picture 6
ER-110ZY162-JPX6	24~56	160~500	330~1050	See Picture 7

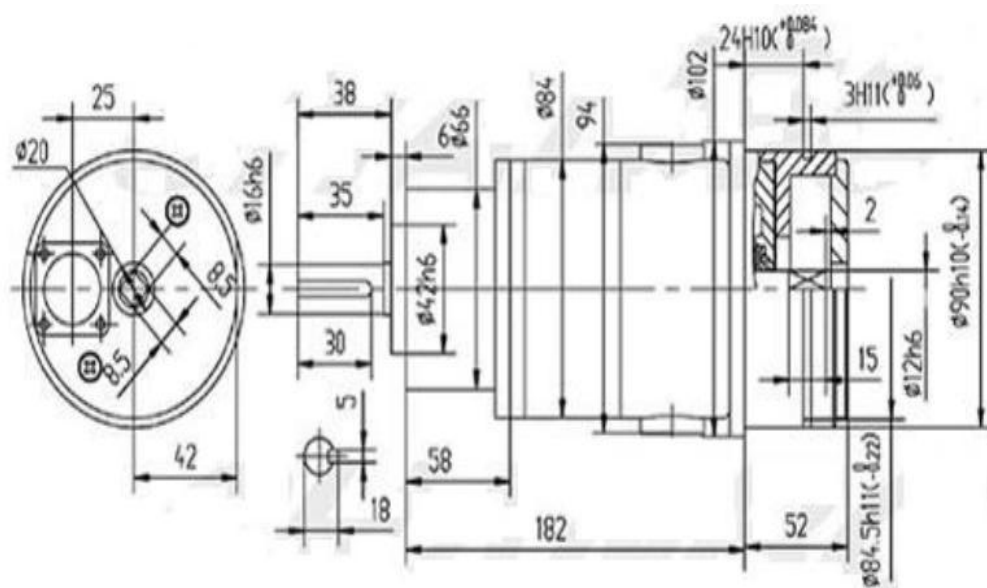
Outline Overall and Installing Dimensions:



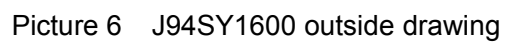
Picture 3 63SYX52 outside drawing

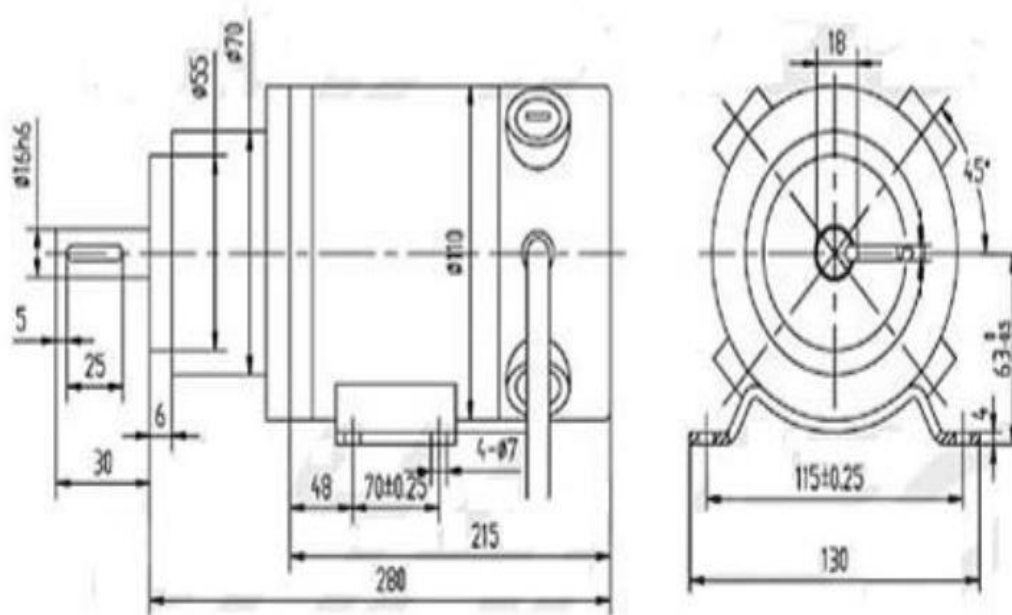


Picture 4 J64SY900 outside drawing



Picture 5 84ZY37~JPX36 outside drawing





Picture 7 110ZY162-JPX6 outside drawing