

ER-Series Brushless Electric Motor

The series brushless motor, brushless torque motor adopts rare-earth cobalt permanent magnet excitation system enclosed self-cooling type, widely used in automatic control and so on used as actuators in the system, also can be used as a driving element: this series motor has small volume, light weight, high power density per unit volume, high can index etc.



Working condition

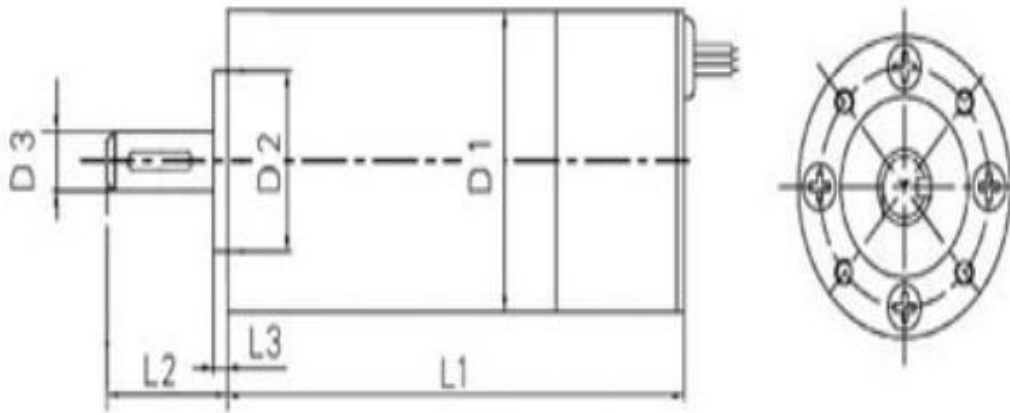
- 1.Environment temperature: -40℃~+70℃
- 2.Air relative humidity: ≤95% (25℃)
- 3.The salt spray, mold
- 4.Satisfy the requirement of GJB1863-94

Brushless motor

ER30~ER60ZWX Technical data

Part No.	Voltage V	Torque N.m	Rotary speed r/min	Power (W)	Current ≤A	Boundary dimension	Remark
ER30ZWX02	28	0.07	5700	42	2.2	Ø30X55	
ER40ZWX17A	36	0.19	20500	400	15	Ø40X80	
ER40ZWX120	24	0.23	5000	120	7	Ø40X104	
ER45ZWX250	24	0.478	5000	250	14	Ø45X123	
ER50ZWX300	24	0.573	5000	300	16	Ø50X118	

ER60ZWX52	24	0.77	5000	400	23	Ø60X133	
-----------	----	------	------	-----	----	---------	--

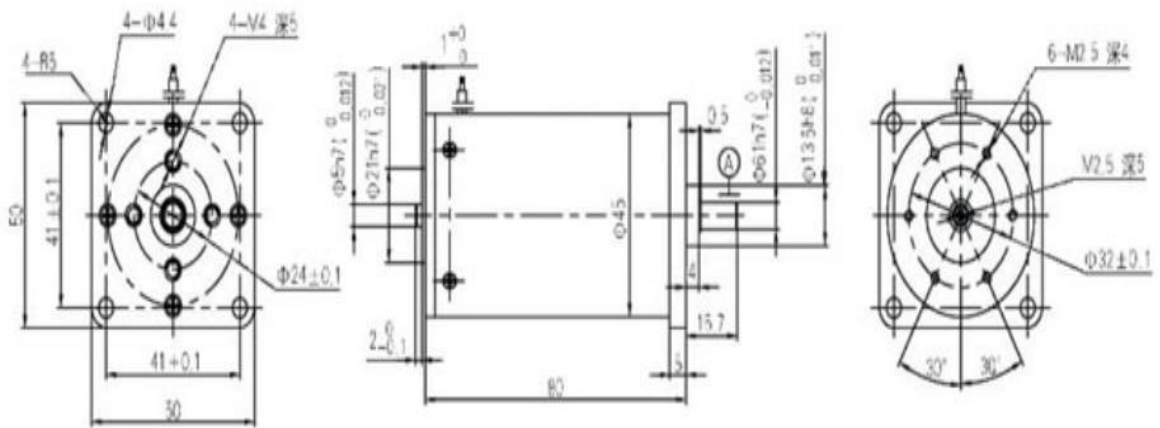


ER30~ER60ZWX Outline overall and installing dimensions

Part No.	L1	L2	L3	D1	D2	D3
ER30ZWX02	55	-	1.2	Ø30	Ø150 -0.05	Ø4
ER40ZWX17A	80	14.5	-	Ø40	Ø16	Ø5
ER40ZWX120	104	20±0.3	2.50 -0.1	Ø40h100 -0.1	Ø22h7	Ø6g6
ER45ZWX250	123	32.5+0.4 -0.1	2.50 -0.1	Ø45	Ø25h7	Ø8g6
ER50ZWX300	118	26±0.2	2.50 -0.1	Ø50	Ø25h7	Ø8g6
ER60ZWX52	132.5	32	4	Ø60	Ø35h7	Ø12g6

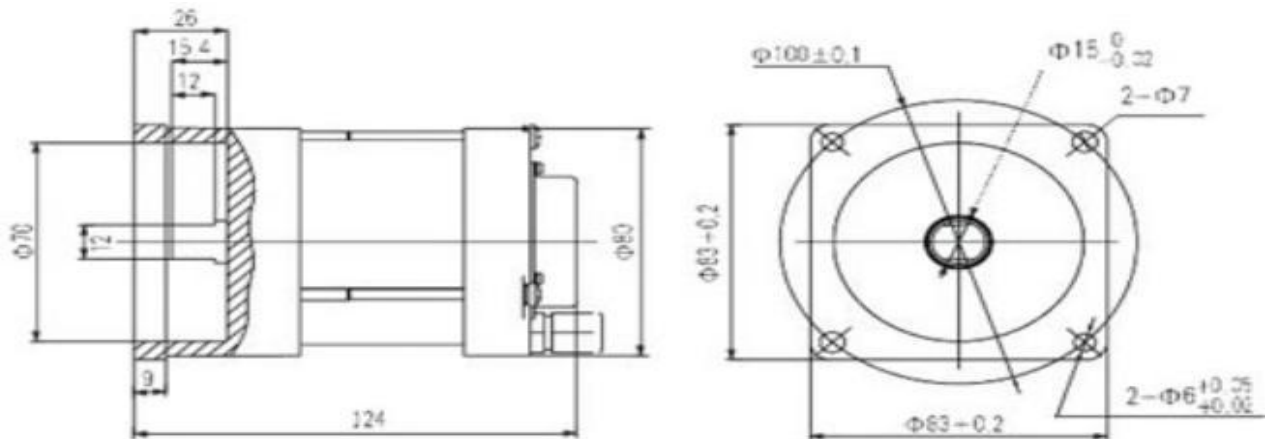
45ZWX800 Technical data, appearance and installation dimensions

Part No.	Voltage V	Torque N.m	Rotary speed r/min	Power (W)	Current ≤A	Boundary dimension	Remark
45ZWX800	56	0.6	13000	820	17	Ø45X80	magnetism encoder



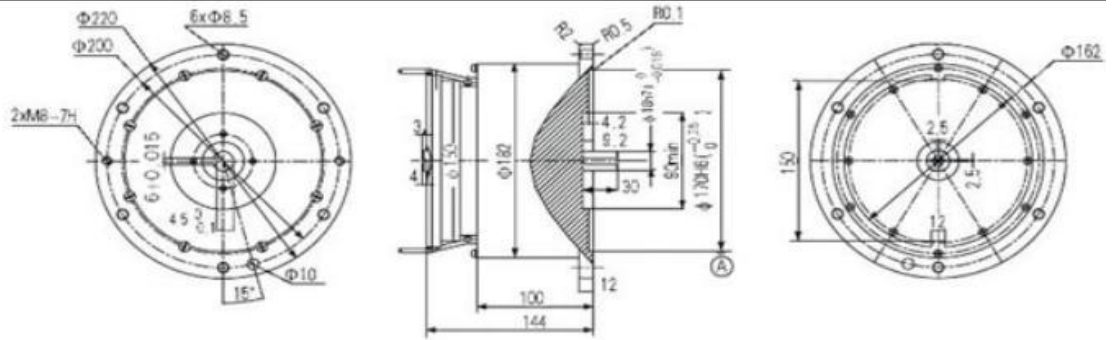
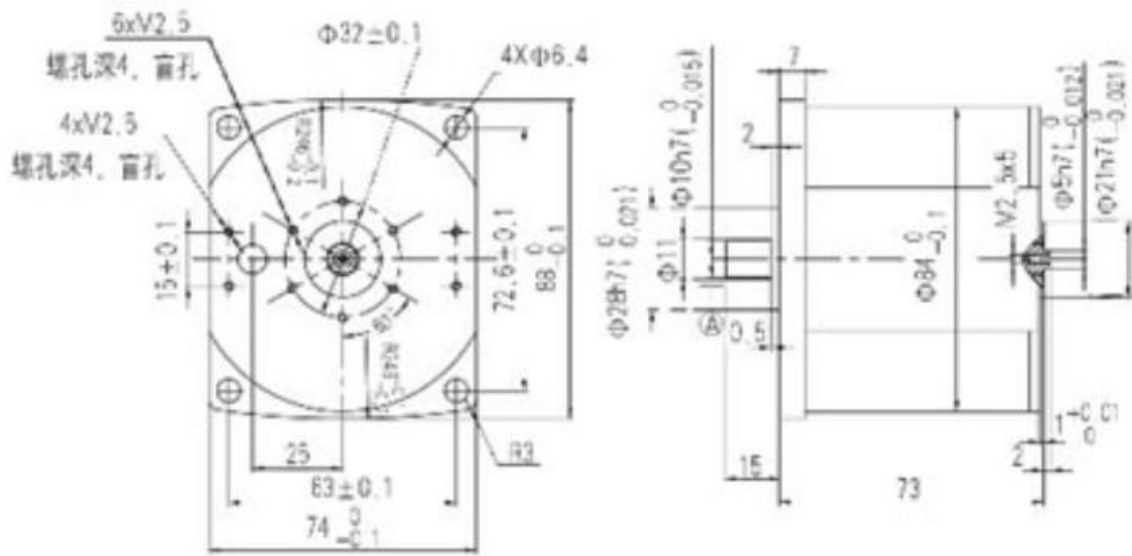
80ZW06 Balanced car dedicated motor technical data, appearance and installation dimensions

Voltage V	Torque N.m	Rotary speed r/min	Power (W)	Current \leq A	Boundary dimension	Remark
72	0.856	6700	600	12	$\Phi 80 \times 124$	



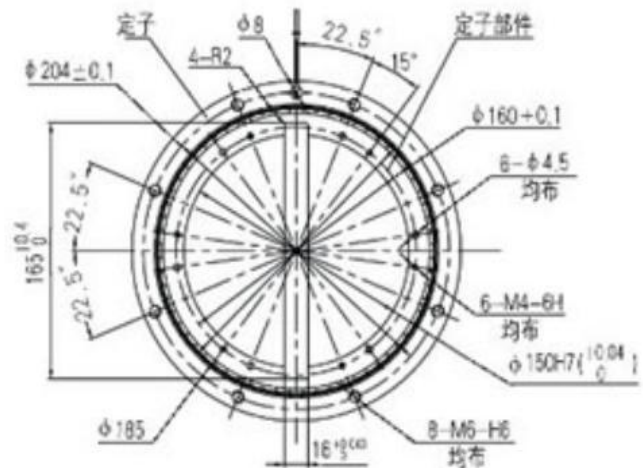
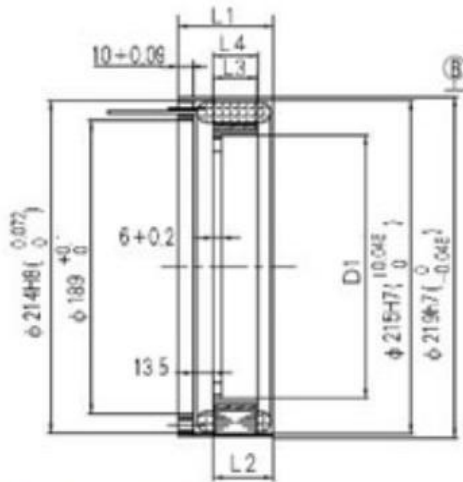
ER84ZX01Y Technical data, appearance and installation dimensions

Voltage V	Torque N.m	Rotary speed r/min	Power(W)	Current \leq A	Boundary dimension	Remark
110	2x0.6	15000	1900	25	$\Phi 84 \times 73$	magnetism encoder



ER230LW Technical data

Part No.	Voltage V	Torque N.m	Rotary speed r/min	Power (W)	Current \leq A	Boundary dimension	Remark
ER230LW01	90	40	85	360	8	$\text{Ø}219 \times 81$	split type
ER230LW02	90	20	85	180	7	$\text{Ø}219 \times 63$	split type



ER230LW Outline overall and installing dimensions

Part No.	L1	L2	L3	L4
ER230LW01	81±0.15	-	47	48±0.2
ER230LW02	63±0.15	39.5±0.15	29	30±0.2

Permanent-magnet synchronous motor

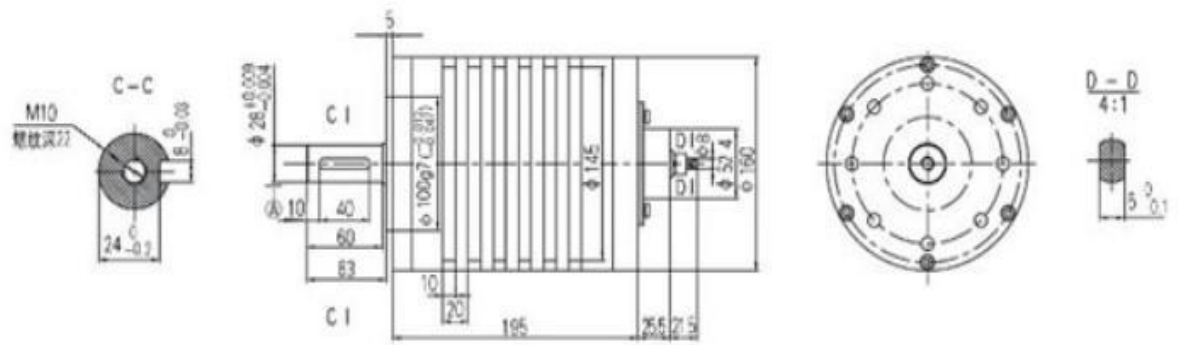
This series of cobalt permanent magnet synchronous motor using rare earth permanent magnet excitation, the sensor for the rotating transformer is closed self-cooled or split type and widely used in automatic control and so on used as actuators in the system, also can be used as a driving element: this series motor has small volume, light weight, a high power density, volume can index is high.

Working condition

1. Environment temperature: -40°C~+70°C
2. Air relative humidity: ≤95% (25°C)
3. The salt spray, mold
4. Satisfy the requirement of GJB789A

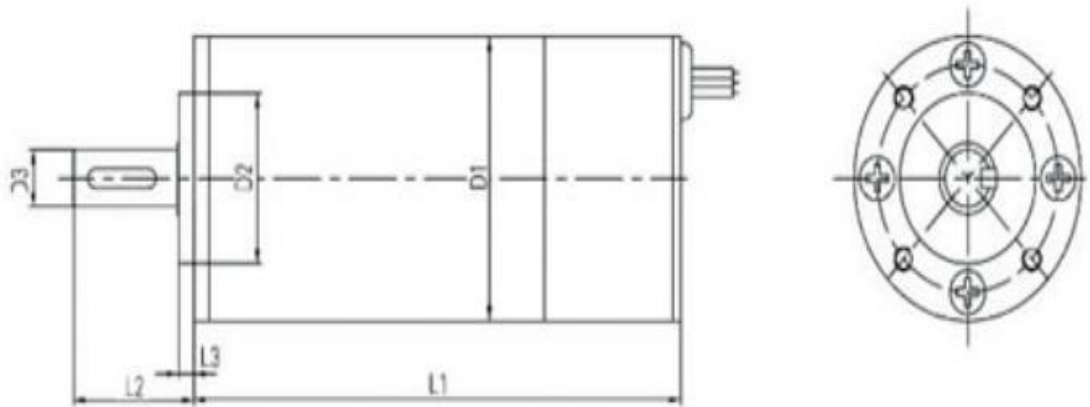
4DZYC-1 Technical data, appearance and installation dimensions

Voltage V	Torque N.m	Revolving speed r/min	Power (W)	Current ≤A	Boundary dimension	Remark
460	41	2600	12000	30	Ø160x242	resolver



ER40~ER60TY technical data

Part No.	Voltage V	Torque N.m	revolving speed r/min	power (W)	electric current ≤A	boundary dimension	Remark
ER40TY120	24	0.23	5000	120	7	Ø40x104	resolver
ER45TY250	24	0.478	5000	250	14	Ø45x123	resolver
ER50TY300	24	0.573	5000	300	16	Ø50x118	resolver
ER60TY51	24	0.77	5000	400	23	Ø60x129	resolver



ER40~ER60TY outline overall and installing dimensions

Part No.	L1	L2	L3	D1	D2	D3
ER40TY120	104	20±0.3	2.5	Ø40h10	Ø22h7	Ø6g6
ER45TY250	123	32.5	2.5	Ø45	Ø25h7	Ø8g6
ER50TY300	118	26±0.2	2.5	Ø50	Ø25h7	Ø8g6
ER60TY51	129	32	4	Ø60	Ø36h7	Ø12g6

